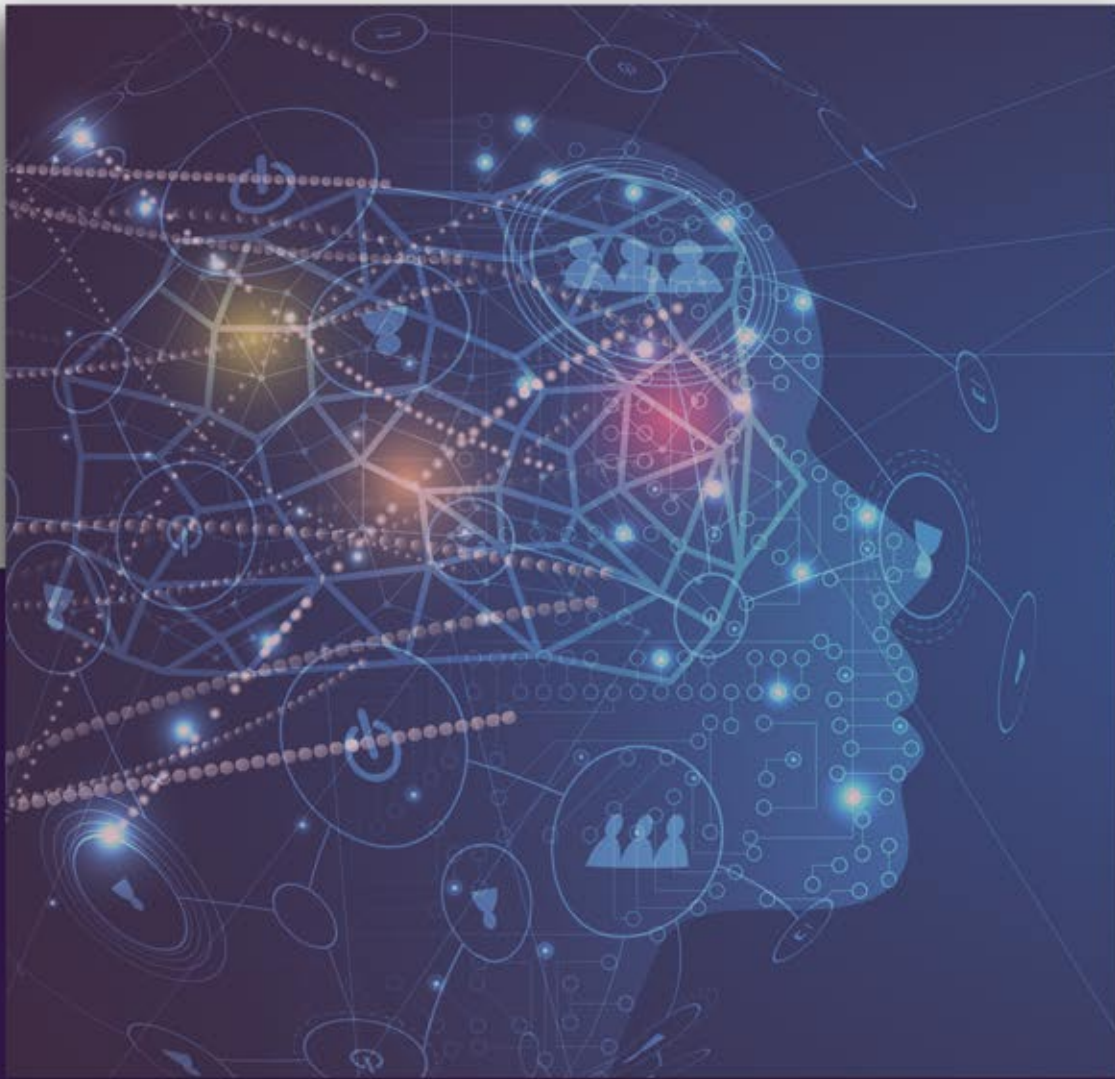


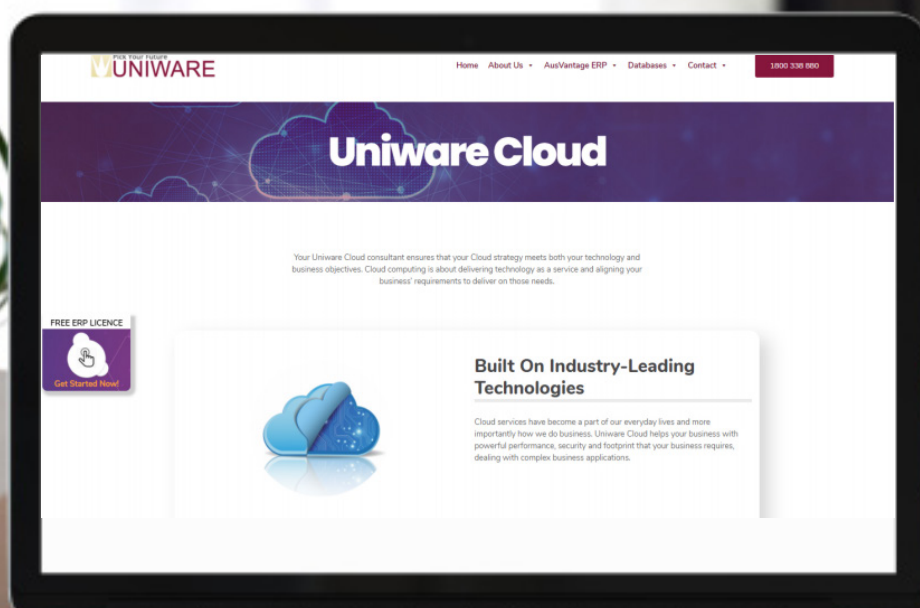
# AUSVANTAGE BUSINESS INTELLIGENCE



ERP SOLUTIONS | DATABASES | UNIWARE CLOUD | SERVICES

**Uniware provides SMEs in the Supply Chain, Manufacturing and Services sectors with ERP solutions to manage business processes.**

**With added value services such as IT Infrastructure, Web Services and e-Commerce, Uniware is an end-to-end IT source satisfying our client's needs to enhance enterprise productivity, mitigate commercial risk and reduce capital expenditure.**



## AUSVANTAGE BUSINESS INTELLIGENCE - AT A GLANCE

Uniware's business intelligence (BI) provides a bird's eye view of the performance of your organisation. Our reports encompass Financial, Inventory, Warehouse, Manufacturing and Sales metrics geared to make your planning and forecasting a breeze.

Great for small to medium size businesses looking to increase market share and manage costs. AusVantage BI gives you a boost in flexibility to avoid downturns, anticipate trends and capitalise on your strengths.



Many clients using our BI tool now have better and more accurate information that increases efficiency through standardising their reporting functions. Our intuitive BI tools allow you to personalise and manage transactional, operational and Ad-hoc reporting. Highly collaborative for access by relevant personnel and an easy to use cube designer for effective data analysis.

# AusVantage

Uniware provides SME's in the Supply chain, Manufacturing and Services sectors with ERP solutions to manage business processes. With added value services such as IT infrastructure, Web Services and Ecommerce, Uniware is an end-to-end IT source satisfying our clients needs to enhance enterprise productivity, mitigate commercial risk and reduce capital expenditure.

### Our BI features include:

#### Report Viewing and Interaction

- Export to external repositories
- Export to various formats
- Real-time customisation
- Fit-to width print preview
- Web Based OLAP/reporting

#### Data Visualisation

- Charting
- Dashboards
- KPI Alerts
- Embedded drill-down

#### Advanced Computing

- Formulas
- Calculated columns/fields
- Dynamic ranking/pivoting/filtering
- Trending
- Percentage Algorithms

#### Report Production

- Query to report
- One-click default reports
- OLAP/ROLAP/MOLAP/HOLAP
- Roll up summary
- Drill-down
- Relational data
- Cube/File security and passwords
- Scheduler
- Report distribution

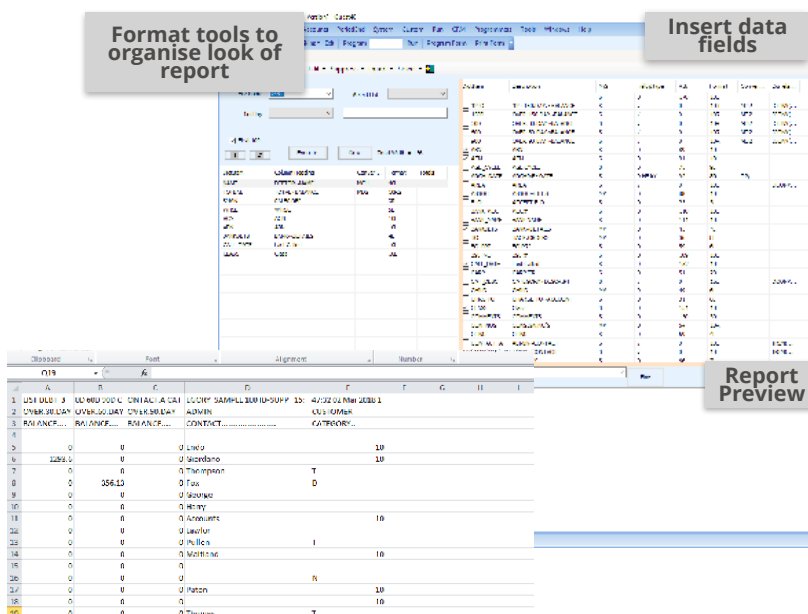
## Cude Designer - Cross Reference Data

The Cube Designer in BI is a Windows-based desktop client that allows the user to design and create Hypercubes from operational source data. It captures the hypercube specification and generates data extraction/transformation/loading (ETL) routines allowing the user to develop highly customised applications to suit specific internal reporting or research requirements.



## Report Writer

The report writer allows the user to create Ad-hoc reports based on the database file dictionaries. This can provide additional information from the database that may not be available in the standard reports and enquiries or alternatively present the data in another format.



**Uniware is a complete IT solution provider offering the following:**

- AusVantage ERP
- SCM/ MRP/ CRM
- IT infrastructure
- e-business
- Web services
- Internet Services

## Enterprise Resource Planning

Inventory Control

- Business Intelligence
- Warehouse Management
- Bills of Materials/Job Costing
- Importing
- Purchasing
- Sales Analysis
- Order Processing/Invoicing

• Consignments

- General Ledger
- Debtors
- Creditors
- Asset/Lease Register
- Point of Sales
- CRM

• Sales Commissions

- Quotations
- Telesales
- e-Commerce ClearConnect
- Service Management
- Hire/Rental Management
- Call Logging
- Project Costing



MELBOURNE  
19 Walkers Road  
Nunawading,  
Victoria  
Australia, 3131

PERTH  
Unit 16, 13  
Rosslyn Street  
West Leederville,  
WA

1800 338 880 | +61 3 8804 0804 | [info@uniware.com.au](mailto:info@uniware.com.au) | [www.uniware.com.au](http://www.uniware.com.au)

